



New Jersey Woodturners Association

A Chapter of the American Association of Woodturners

www.njwoodturners.com

April 28, 2008

This is the newsletter of the New Jersey Woodturners Association. Meetings are held monthly at the Essex County Environmental Center in Roseland, NJ. Meetings are held at 7 p.m. on the days indicated. Anyone wanting more information may contact us by email at njwoodturners@gmail.com. Information is also available at the club's web site www.njwoodturners.com.

Club Officers: 2008

President - Wil Goldschmidt
Vice Pres - Hitoshi Tanaka
Secretary - Tony Whalen
Treasurer - Maurice Cohen
Librarian - Rita Lefkow
Membership - Walt Drummond
Web Master - Bruce Arnold
Programs - Gil Malave
Weekend Workshops - Bruce Long
Photographer - Adrien Coblentz

Meeting Schedule - 2008:

Jan 28 Duke Hemmer "Ball in Cube" demo
Feb 25 Bob Roth "Reading Wood" talk
Dennis Fuge Panel discussion on wood
Show and Tell
Mar 24 Bob Rosand Demo, Topic TBD
Apr 28 Dennis Fuge Deep Hollow Turning
From The Bottom Up
May 19* Hitoshi Tanaka Decorating and
Embellishing Turnings
Show and Tell (Novice)
*(May 26 - Memorial Day)
Jun 23 Nick Agar Topic TBD
Jul 28 Steve Antonucci Hollowing Techniques
and Tools
Aug 25 Tool Sale and Show and Tell
Sep 22 Bill Grumbine TBD
Oct 27 Jim Duxbury Kaleidoscopes
Nov 24 Elections
Super Show and tell Critique
Club Challenge, Club Critique
December No meeting

PERSONAL NEWS

Starting on a sad note this month, Joel Berkowitz informed us that Ruben Villafuerte passed away. He will be missed. The club made a donation to the American Cancer Society in Ruben's name to be used for cancer research.

On another personal matter, Elaine Gould informed us of the unveiling of the gravestone for Larry Gould on Sunday May 4 at 2:00 p.m. Directions can be found at <http://www.riversidecemetery.org/index.html>.

COMING EVENTS

Our woodturning weekend workshops will be conducted in May with a few more slots in June. By now it is likely that all slots are filled. It would be nice to acknowledge the instructors and thank them for contributing their time and effort. The instructors are Maurice Cohen, Jim Frederick, Dennis Fuge, Wil Goldschmidt, Isaac McDonald, Hitoshi Tanaka, Gil Malave, Steven Antonucci and Tom Gall.

Hal Ottenstein has put out a call for help at the East Brunswick Art Show Saturday, June 7, 2008. The rain date is Sunday, June 8. PLEASE HELP. He needs people to load, unload, setup and turn. The information has already been circulated. Hal's phone memo is 732-381-6774 and his email is haldini@aol.com.

APRIL EVENTS

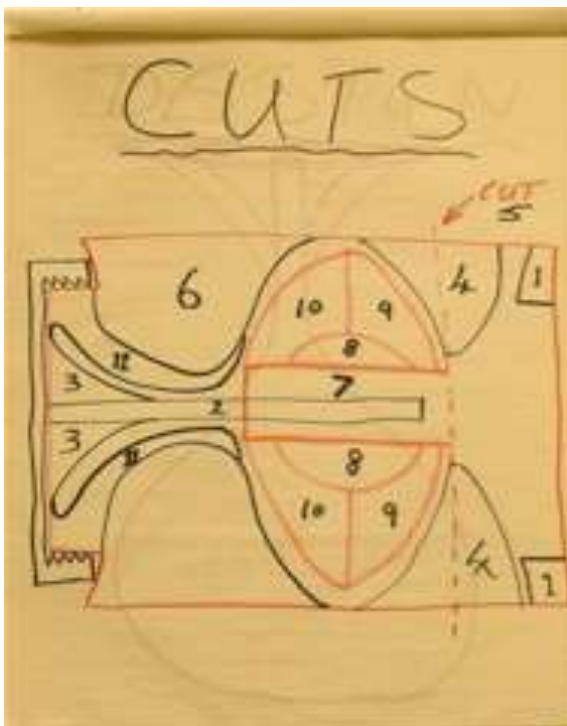
The club participated in the Earth Day event at the Environmental Center on April 18. Donations for tops amounted to \$325. This is a nice addition to what will be contributed to the Childrens' hospital. Club members at the event included Walt Drummond, Jim Beckwith, Dennis Fuge, Gil Malave, Mort Olin, Duke Hemmer, Jerry McCaffrey and Tony Whalen. Some pictures follow.

*REMINDER: THE MAY MEETING IS ON THE THIRD MONDAY AND NOT THE FOURTH BECAUSE OF THE HOLIDAY.



Turning demos at the Earth Day events

The following photos, taken by Adrien Coblenz at the April meeting, capture the demonstration put on by Dennis Fuge on the subject Deep Hollow Turning From The Bottom Up.



This is the roadmap which indicates the order in which cuts are made.



1. Cut 1 is done and turned



2. Drilling 1/2" center



3. Cuts 4 and 5 partially done



4. Some work on cut 3



5. Working on cut 6



6. Coup de grace



7, Forstner bit for cut 7



8. Working cuts 8, 9, 10



9. Fitting bottom tenon



10. Working bottom mortise



11. Set up to finish top



12. Almost done



13. Jig to work bottom



14. Clean up tenon



15. "groove" the joint. Multiple grooves mask the joint

A sample of
Dennis' work



Dennis was kind
enough to donate
this item for our
raffle this month –
the club benefitted
greatly from it!